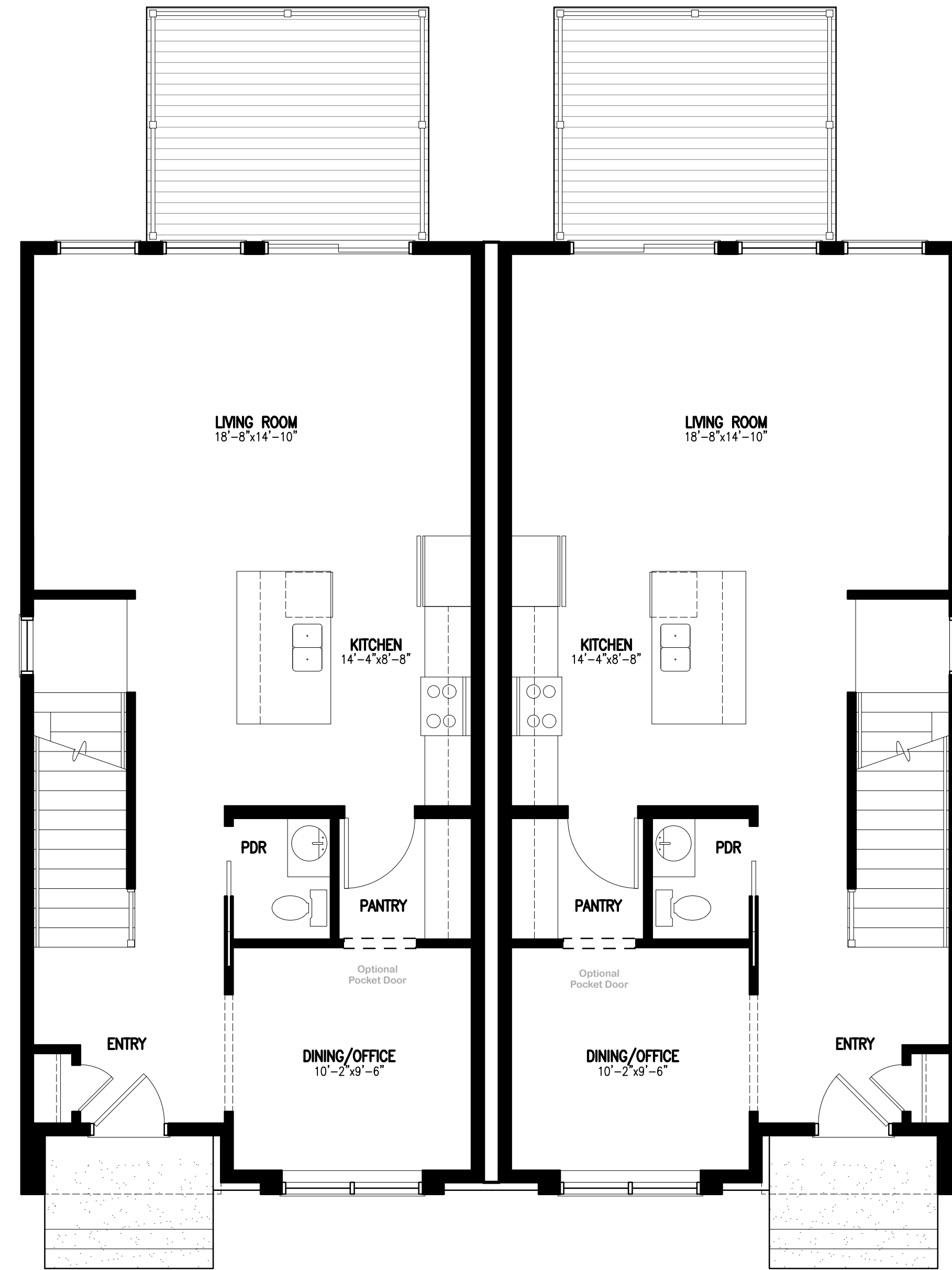


BASEMENT FLOOR PLAN

BASEMENT = 86 SQ.FT.	IN-LAW SUITE = 702 SQ.FT.
BASEMENT = 8.0 SQ.M.	IN-LAW SUITE = 65.2 SQ.M.



FIRST FLOOR PLAN

FIRST FLOOR = 787 SQ.FT.
FIRST FLOOR = 73.1 SQ.M.

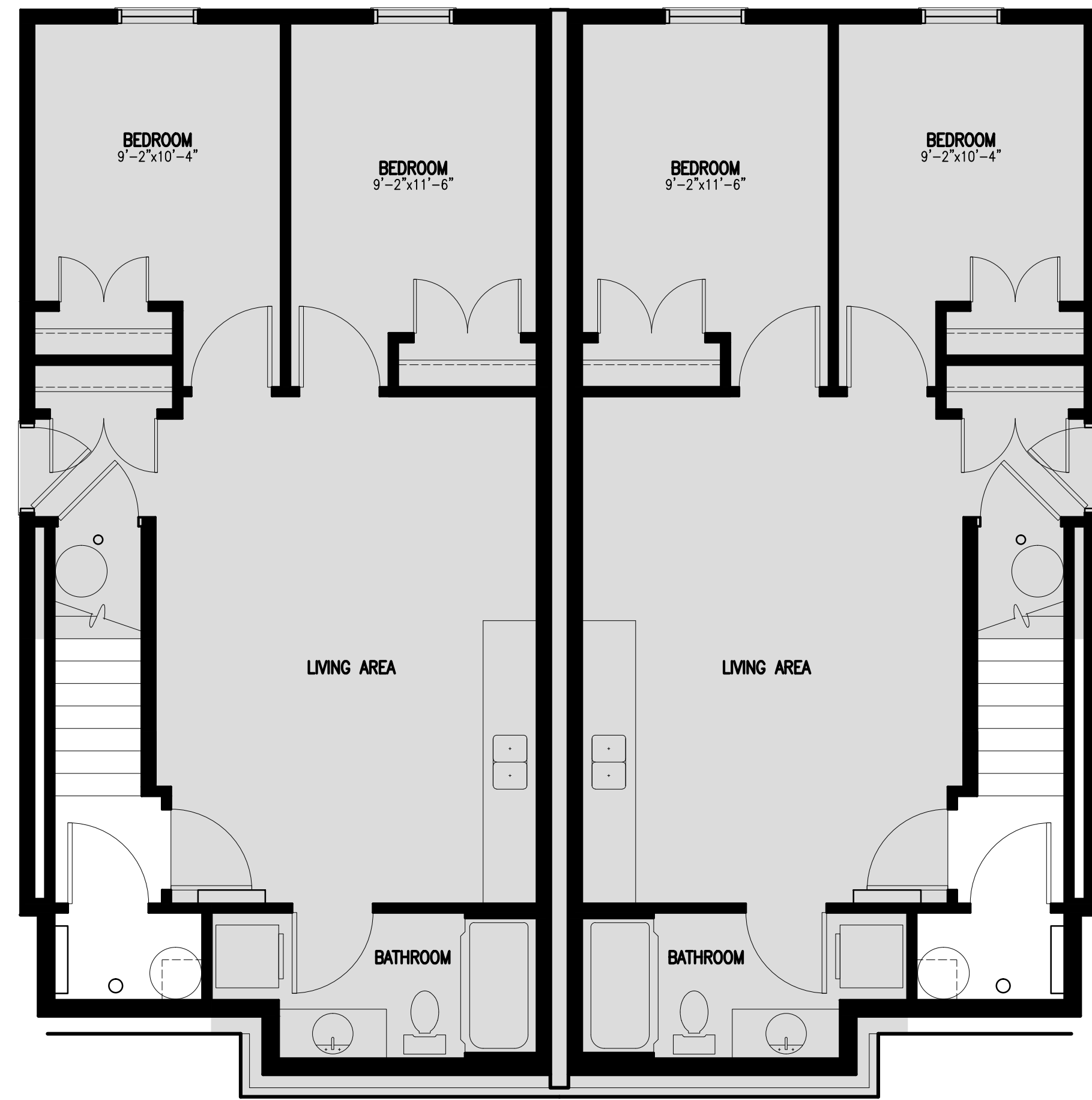


SECOND FLOOR PLAN

SECOND FLOOR = 796 SQ.FT.
SECOND FLOOR = 74.0 SQ.M.



FRONT ELEVATION



BASEMENT FLOOR PLAN

BASEMENT = 86 SQ.FT.	IN-LAW SUITE = 702 SQ.FT.
BASEMENT = 8.0 SQ.M.	IN-LAW SUITE = 65.2 SQ.M.



FIRST FLOOR PLAN

FIRST FLOOR = 787 SQ.FT.
FIRST FLOOR = 73.1 SQ.M.



SECOND FLOOR PLAN

SECOND FLOOR = 796 SQ.FT.
SECOND FLOOR = 74.0 SQ.M.



FRONT ELEVATION